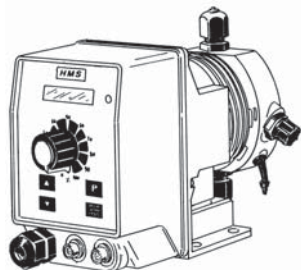
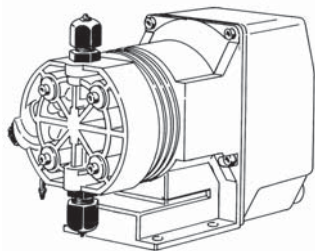


"HMS DIGITAL" series Metering Pumps

Data Sheet

Configuration Info



Power supply: 230 VAC (180-270 VAC)
 Power supply: 115 VAC (90-135 VAC)
 Power supply: 24 VAC (20-32 VAC)
 Power supply: 12 VDC (10-16 VDC)



115 VAC Metering pumps,
 except 2001, 1802 and
 0706 capacities.

MODELS		
	self venting models	
MF	AF	"MF" Digital multifunction pump (Constant, Divide, Multiply, PPM, Batch, Volt, mA), stand-by and flow sensor input, alarm output, level control.
DC	AD	"DC" Digital constant pump, stand-by input alarm output, level control.
ML	MA	"CL" Proportional pump for free chlorine control with level control, supplied without chlorine probe. It operates with chlorine cells mod. ECL1 and ECL6/7/12, not provided.
EN	AN	"EN" Pump with weekly timer, microprocessor, digital controls, LCD display, level probe and electrovalve control.
PH	AA	"PH" Proportional pump driven by built in pH-meter and level control, supplied without pH probe.
RH	AR	"RH" Proportional pump driven by built in ORP-meter and level control, supplied without Redox probe.

CAPACITIES				
2001	1 l/h against 20 bar	0.26 GPH against 290 PSI	Tubing: 4x8	Valve: 3/8"
1802	2 l/h against 18 bar	0.53 GPH against 261 PSI	Tubing: 4x8	Valve: 3/8"
1004	4 l/h against 10 bar	1.06 GPH against 145 PSI	Tubing: 4x6	Valve: 3/8"
0706	6 l/h against 7 bar	1.59 GPH against 102 PSI	Tubing: 4x6	Valve: 3/8"
0408	8 l/h against 4 bar	2.11 GPH against 58 PSI	Tubing: 4x6	Valve: 3/8"
0216	16l/h against 2 bar	4.23 GPH against 29 PSI	Tubing: 6x8	Valve: 1/2"

CAPACITIES self-venting metering pumps				
200,5	0,5 l/h against 20 bar	0.13 GPH against 290 PSI	Tubing: 4x8	Valve: 3/8"
1801	1 l/h against 18 bar	0.26 GPH against 261 PSI	Tubing: 4x8	Valve: 3/8"
102,8	2,8 l/h against 10 bar	0.74 GPH against 145 PSI	Tubing: 4x6	Valve: 3/8"
0704	4 l/h against 7 bar	1.06 GPH against 102 PSI	Tubing: 4x6	Valve: 3/8"
0406	6 l/h against 4 bar	1.59 GPH against 58 PSI	Tubing: 4x6	Valve: 3/8"
0211	11 l/h against 2 bar	2.90 GPH against 29 PSI	Tubing: 6x8	Valve: 1/2"

POWER SUPPLY	
00	230 VAC Schuko plug
0S	230 VAC Australian plug
01	230 VAC without plug
03	115 VAC US plug
04	24 VAC without plug
05	12 VDC *
07	24 VDC

Model H - MF 2001 V 00 00

LIQUID ENDS								
	Head	Orings	Valve		Diaphragm	Tubing		Viscosity Max CPS
			Body	Balls		Delivery	Suction	
V	Polypropylene	Viton®	Polypropylene	Ceramic	PTFE	Polyethylene	PVC	100
D	Polypropylene	Ethylene Propylene	Polypropylene	Ceramic	PTFE	Polyethylene	PVC	100
W	Polypropylene	Nytrile	Polypropylene	Ceramic	PTFE	Polyethylene	PVC	100
T	Polypropylene	Viton®+PTFE	Polypropylene	Ceramic	PTFE	Polyethylene	PVC	100
S	Polypropylene	Silicone	Polypropylene	Ceramic	PTFE	PVDF	PVDF	100
A	Acrylic	Viton®	Polypropylene	Ceramic	PTFE	Polyethylene	PVC	100
K	PVDF	Viton®	PVDF	Ceramic	PTFE	PVDF	PVDF	100
P	PVDF	EPDM	PVDF	Ceramic	PTFE	PVDF	PVDF	100
Z	SS	Viton®	SS	SS	PTFE	N/A	N/A	100
\$	Acrylic	Viton®	Polypropylene	SS+Hastelloy spring	PTFE	Polyethylene	PVC	8000*

Viton® is a registered trademark of DuPont Dow Elastomers.

* Using high viscosity pump head "\$" pump output may results lower in some applications.

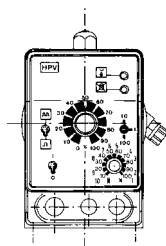
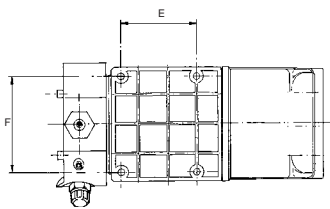
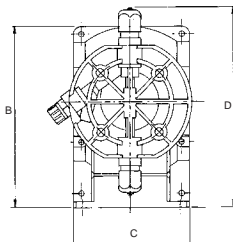
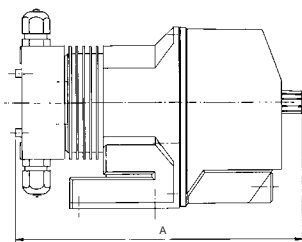


Via Molinello 38 16035 Rapallo (GE)
 Tel +39 0185 263015 Fax +39 0185260114
 www.atasrl.it atasrl@atasrl.it

"HMS DIGITAL" series Metering Pumps

Data Sheet

SPECIFICATIONS					
	Stroke speed		Stroke length minimum linear adjustment	Average Input Power at max speed	Shipping weight
	Min	Max			
	Strokes per Hour	Strokes per Minute			
2001	1	120	30%	19 Watt	4.1 Kg (9.02 Lbs)
1802	1	150			
1004	1	150			
0706	1	150			
0408	1	150			
0216	1	150			
<i>Self-venting models</i>					
200,5	1	120			
1801	1	150			
102,8	1	150			
0704	1	150			
0406	1	150			
0211	1	150			



DIMENSIONS		
	mm	inch
A	236	9.29
B	144	5.66
C	91	3.58
D	160	6.29
E	61	2.40
F	77	3.03

IP65 enclosure (NEMA4x)

The series "HMS DIGITAL" dosing pumps are manufactured in moulded glass filled Polypropylene housing to ensure protection against aggressive chemicals and tough environment.

OUTPUT INFORMATION									
	Liters per Hour		Gallons per Hour		mL/cc per Stroke		Maximum Injection Pressure		
	Min	Max	Min	Max	Min	Max			
2001	0.042	1	0.011	0.26	0.042	0.14	20 bar	(290.07PSI)	
1802	0.069	2	0.018	0.52	0.069	0.23	18 bar	(261.07 PSI)	
1004	0.135	4	0.035	1.05	0.135	0.45	10 bar	(145.03 PSI)	
0706	0.198	6	0.052	1.58	0.198	0.66	7 bar	(101.52 PSI)	
0408	0.267	8	0.070	2.11	0.267	0.89	4 bar	(58.01 PSI)	
0216	0.54	16	0.142	4.22	0.54	1.8	2 bar	(29.00 PSI)	
OUTPUT INFORMATION <i>self-venting metering pumps</i>									
200,5	0.021	0.5	0.005	0.13	0.021	0.07	20 bar	(290.07PSI)	
1801	0.033	1	0.008	0.26	0.033	0.14	18 bar	(261.07 PSI)	
102,8	0.093	2.8	0.024	0.74	0.093	0.31	10 bar	(145.03 PSI)	
0704	0.132	4	0.034	1.06	0.132	0.44	7 bar	(101.52 PSI)	
0406	0.201	6	0.053	1.59	0.201	0.67	4 bar	(58.01 PSI)	
0211	0.366	11	0.096	2.91	0.366	1.22	2 bar	(29.00 PSI)	