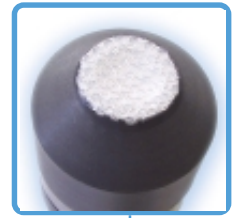




Accessories for Instruments



AMPEROMETRIC Cells

ECL9 * ECL10 * ECL11

A.T.A. amperometric cells are the ideal complements to A.T.A. controllers for an accurate and reliable control of processes.

Amperometric easy-maintenance cells, provide accurate reading values and fast responses, performances required for the most accurate measurements. The section below shows the electrode's differences so that you can select the model best fit for your requirements.



ECL9

Hydrogen Peroxide (H_2O_2) amperometric cell, temperature compensated. The ECL9 is membrane covered, two electrode sensors.

ECL10

Ozone (O_3), amperometric cell, temperature compensated. The ECL10 is membrane covered, two electrode sensors.

ECL11

Peracetic acid amperometric cell. The ECL11 is membrane covered, two electrode sensors.

TECHNICAL DATA OF ALL MODELS

Functions	ECL9	ECL10	ECL11
Measurement Range	0 ÷ 200 mg/l 0 ÷ 2000 mg/l	0 ÷ 2 mg/l	0 ÷ 200 mg/l
Flow	40 l/h		
Body	PVC		
Diameter	25		
Probe Length	17,8 cm		
Electrical Connection	4 wires		
Cable Length	1,5 m		
Temperature	1 - 50 °C		
Pressure	max 1 bar		