



M e t e r i n g P u m p s

HMS SERIES



H & HMS DIGITAL

Stroke length adjustment and stroke speed adjustment for highly accurate dosing.

Wide control opportunities, without any external pacer, such as pulse division and multiplication, 4 ÷ 20 mA, mV and V input.

Power supply continuous sampling ensure always the same energy to the solenoid in order to have the same length and power, giving longer life to the pump and more accurate dosing.



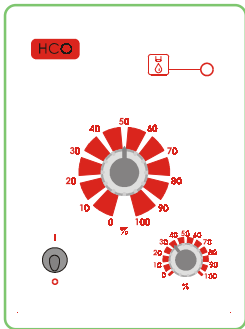
Features pH, ORP potential (Redox) built-in instruments and weekly timer.



M E T E R I N G P U M P S

HCO * HCL * HIS * HPV * HPVM * HIC

H MODELS & CONTROL PANELS

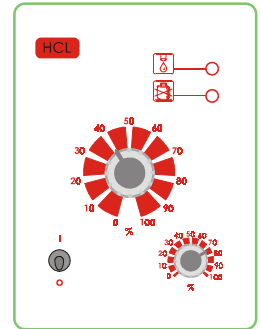


HCO

Constant pump with stroke speed adjustment and stroke length adjustment

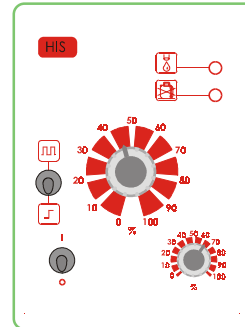
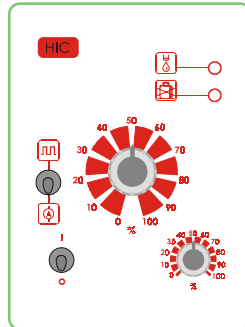
HCL

Constant pump with level control, stroke speed adjustment and stroke length adjustment



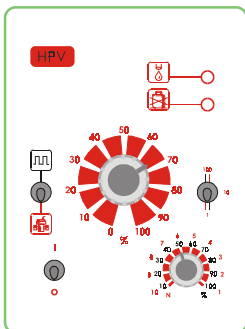
HIC

Constant-Proportional pump driven by current signal (0 / 4mA = 0 pulses; 20mA = max pulses) and level control



HIS

Constant-Proportional pump driven by external digital signal, with level control: to each external pulse correspond one pump stroke

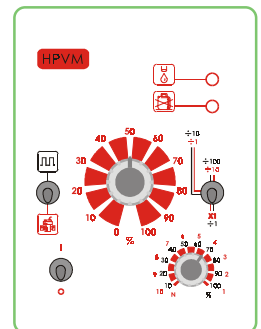


HPV

Constant-Proportional pump driven by external digital signal, with pulse divider mode

HPVM

Constant-Proportional pump driven by external digital signal with pulse division and multiplication



	HCO	HCL	HIS	HPV	HPVM	HIC
--	-----	-----	-----	-----	------	-----

Input Signals	None	None	Digital pulses	Digital pulses Flow sensor on demand	Digital pulses	mA Current
Internal Controller	Stroke speed	Stroke speed	None	Pulse Divider	Pulse Divider and Multiplier	None
Alarm output	Level on demand, PV model without flow on demand					

M E T E R I N G P U M P S

HMS MAN * HMS EXT * HMS CL * HMS EN * HMS PH * HMS RH

HMS DIGITAL MODELS & CONTROL PANELS



HMS MAN

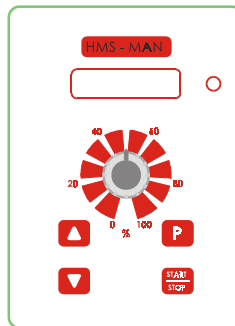
Constant pump with level control and frequency digital control

HMS EXT

Multifunction-Proportional pump with analogic and digital signal input, level control

HMS CL

Proportional pump for free chlorine (Cl₂) control (from 0 to 10,00 mg/l) with level control. It operates with chlorine cells mod. ECL1 and ECL4/5/6/7/12



HMS EN

Pump with weekly timer, microprocessor, digital controls, LCD display, level probe and electrovalve control

HMS PH

Proportional pump driven by internal built-in pH meter (0÷14pH) and level control

HMS RH

Proportional pump driven by internal built-in Redox (ORP Potential) meter (0÷1000mV) and level control

	HMS MAN	HMS EXT	HMS CL	HMS EN	HMS PH	HMS RH
--	------------	------------	-----------	-----------	-----------	-----------

Inputs signals	None	Digital Pulses mA Current V Voltage mV Voltage	Chlorine probe	--	pH probe	Redox probe
Internal controller	Stroke speed	Pulse divider and multiplier Analog signal proportional range definition	Chlorine controller	Weekly timer	pH meter proportional	Redox meter proportional
Alarm output	Level on demand					

	Pump Head	Diaphragm	Ball Checks	Valve Cartridge	Hose Connection kit	Foot Filter	Hoses	O-rings
--	-----------	-----------	-------------	-----------------	---------------------	-------------	-------	---------

STANDARD	Polypropylene	PTFE	Ceramic	Polypropylene	Polypropylene	Polypropylene	PE	Viton®
ON DEMAND	PVDF Acrylic SS	--	PTFE Glass SS	PVDF SS	PVDF	PVDF	PVDF PVC	EPDM NBR

Viton® is a registered trademark of DuPont Dow Elastomers.

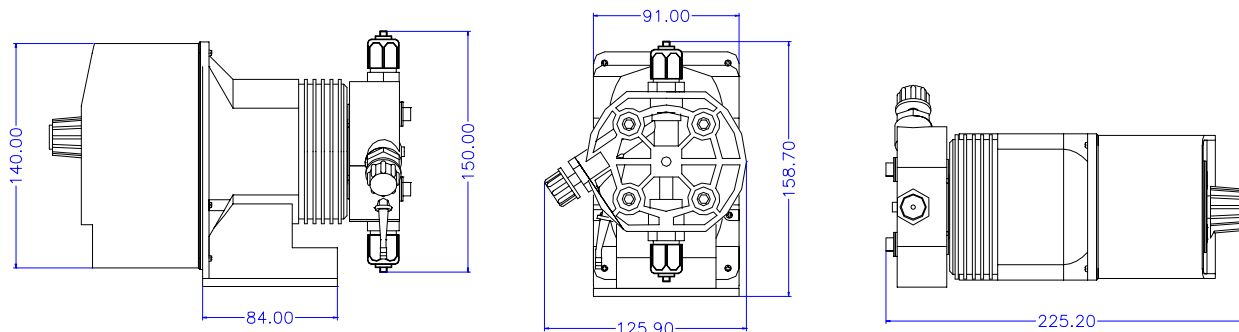
Technical Data of All Models

Flow	Max Capacity l/h	Max Pressure bar	Capacity l/h	Pressure bar	ml/stroke	Strokes/min	Hoses mm	Watt W	Shipping weight Kg
20 01	1	20	1,5	10	0,14	120	4 X 8	19 W	4,1
18 02	2	18	3	9	0,23	150	4 X 8	19 W	4,1
10 04	4	10	7	5	0,45	150	4 X 6	19 W	4,1
07 06	6	7	7	3,5	0,66	150	4 X 6	19 W	4,1
04 08	8	4	10	2	0,89	150	4 X 6	19 W	4,1
02 16	16	2	17	1	1,8	150	6 X 8	19 W	4,1

Power Supply: 115 - 230 - 24 VDC.

On demand are available other power supply.

HMS Series are available in Acrylic, PVDF, Stainless Steel and PP pump heads. All pump heads are also available with self-venting feature except Stainless Steel pump heads.



All dimensions are in *mm* unless specified.